



## Main Features:-

- ♦ Flanged PN16, Full Bore
- ♦ Stainless Steel Body, Ball & Stem
- ♦ Anti-blowout Stem, Anti-static Device
- ♦ Firesafe Design
- ♦ Rated PN16, Temperature -20°C to 180°C

\*Temperature and pressure determined by valve body, seat etc.

## Suitable Applications & Approvals:



INDUSTRY

## SERIES: 10116

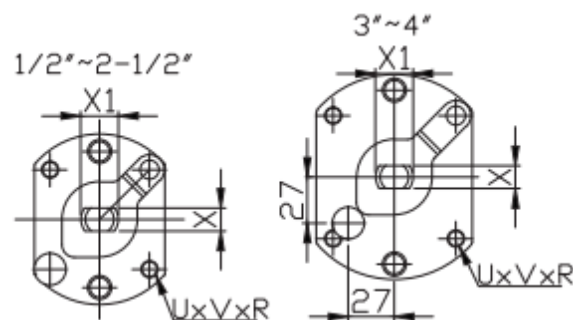
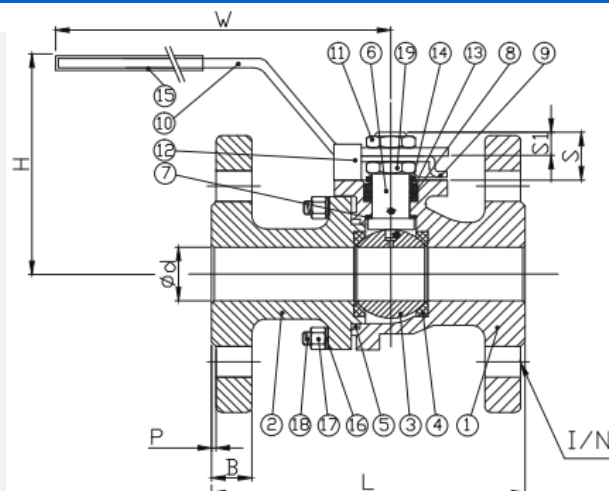
MANUFACTURER:

**AVOL**  
INDUSTRIAL VALVES



No	Name	Materials
1	Body	SS CF8M
2	Cap	SS CF8M
3	Ball	SS CF8M
4	Seats	PTFE
5	Joint Gasket	PTFE
6	Stem	SS 316
7	Thrust Washer	PTFE
8	Stem Packing	PTFE
9	Stopper	SS 304
10	Handle	SS 304
11	Handle Nut	SS 304
12	Stop Pin	SS 304
13	Stem Ring	SS 304
14	Belleville Washer	SS 301
15	Cover	PVD
16	Spring Washer	SS 304
17	Nut	SS 304
18	Stud Bolt	SS 304
19	Stem Nur	SS 304

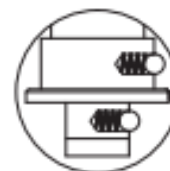
1/2" - 4"



ANTI-STATIC DEVICE

1/2"~3/4"

1"~4"



VALVE DIMENSIONS

## Torque

Size	Nm	Size	Nm
1/2"	5.4	2"	29
3/4"	7.8	2 1/2"	50
1"	10.6	3"	77
1 1/4"	15	4"	110
1 1/2"	20		



T +44 (0)1386 552369

E sales@allvalves.co.uk

W www.allvalves.co.uk

F +44 (0)1386 554227



# BALL VALVES

**ALLVALVES**  
O N L I N E

**AVOL**  
INDUSTRIAL VALVES

AVOL valves are our range of industrial valves selected by our experienced technical sales team.

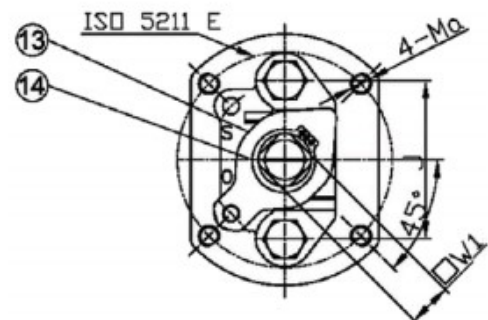
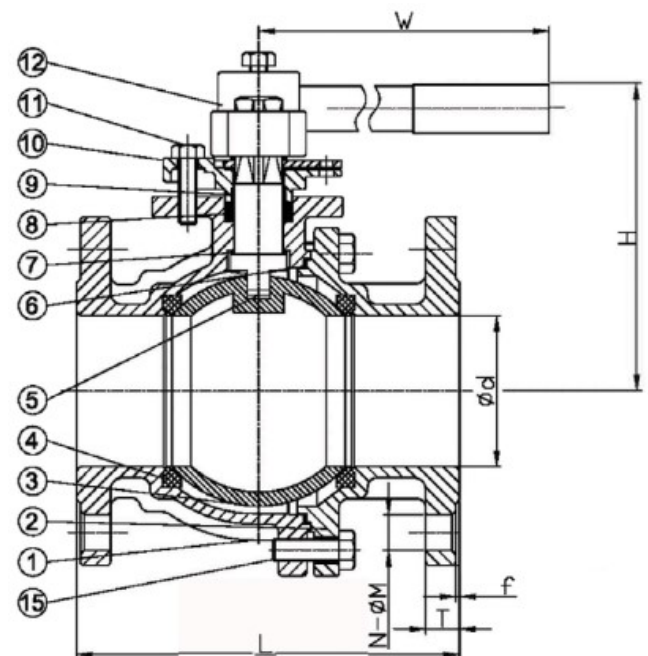
**SERIES: 10116**

Size	d	L	B	P	I/N	X	X1	UxVxR	S	S1	H	W	Kg
1/2"	15	115	14	2	14/4	8.6	M14x2.0	4-42xM5xP0.8	19.8	6.3	94	138	1.8
3/4"	20	120	16	2	14/4	8.6	M14x2.0	4-42xM5xP0.8	21	7.5	97	138	2.5
1"	25	125	16	2	14/4	10	M16x2.0	4-50xM6xP1.0	24.3	9.1	115	173	3.4
1 1/4"	32	130	16	2	18/4	10	M16x2.0	4-50xM6xP1.0	25.8	10.8	119	173	4.6
1 1/2"	38	140	16	3	18/4	12	M20x2.5	4-70xM8xP1.25	36	17.5	141	195	6.4
2"	50	150	18	3	18/4	12	M20x2.5	4-70xM8xP1.25	37.2	18.7	149	195	8.5
2 1/2"	65	170	18	3	18/4	12	M20x2.5	4-70xM8xP1.25	37.5	19	164	220	12.1
3"	80	180	20	3	18/8	16	M27x3.0	4-102xM10xP1.5	47	26.1	172	328	17.9
4"	100	190	20	3	18/8	16	M27x3.0	4-102xM10xP1.5	44.3	23.4	187	328	23.3

## No Name Materials

1	Body	SS CF8M
2	Cap	SS CF8M
3	Ball	SS CF8M
4	Seats	PTFE
5	Stem	SS 316
6	Gasket	PTFE
7	Thrust Washer	PTFE + 25% Carbon
8	Gland Packing	PTFE
9	Stem Bushing	PTFE
10	Gland	SS 304
11	Gland Bolt	SS 304
12	Handle	FCD
13	Stopper	SS 304
14	Snap Ring	SS 304
15	Bolt	SS 304

6"



Anti-static

VALVE DIMENSIONS

d	L	T	f	N/M	W
150	350	22	3	8/22	24

4-Ma	ISO	E	H	W	Kg
------	-----	---	---	---	----

6"	M12	F12	125	247	750	53.0
----	-----	-----	-----	-----	-----	------

## ALL VALVES ONLINE

AllValves Online™ have used decades of experience in the valve industry to select a range of products that match the Allvalves Online ethos - value for money. All Valves Products are from reputable sources and have been sold in significant quantities for many years, are installed in a wide variety of applications, and are known to be durable in service.

T +44 (0)1386 552369

E sales@allvalves.co.uk

W www.allvalves.co.uk

F +44 (0)1386 554227



# BALL VALVES

**ALLVALVES**  
O N L I N E

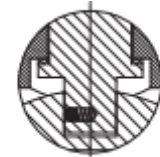
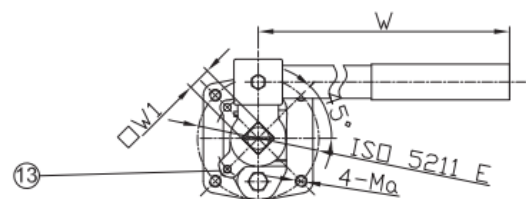
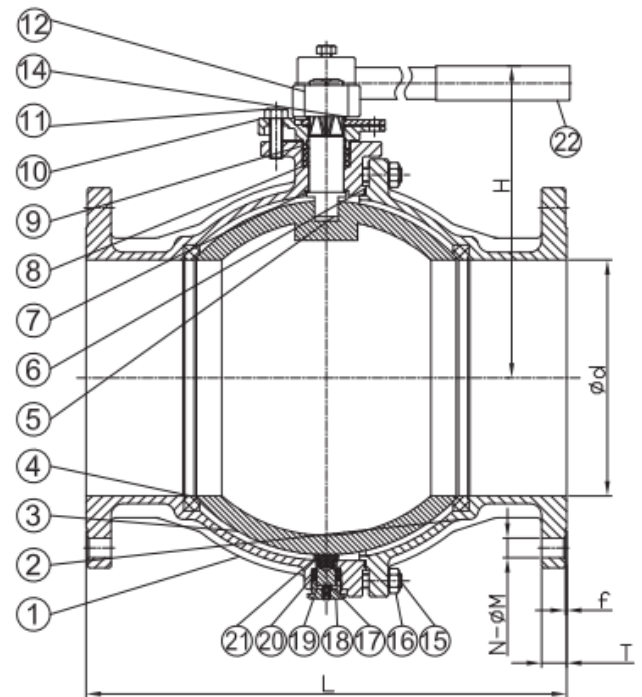
**AVOL**  
INDUSTRIAL VALVES

AVOL valves are our range of industrial valves selected by our experienced technical sales team.

**SERIES: 10116**

**No Name Materials 8"**

1	Body	SS CF8M
2	Cap	SS CF8M
3	Ball	SS CF8M
4	Seats	PTFE
5	Stem	SS 316
6	Gasket	PTFE
7	Thrust Washer	PTFE + 25% Carbon
8	Packing	PTFE
9	Stem Bushing	PTFE
10	Gland	SS 304
11	Gland Bolt	SS 304
12	Handle	CS 1.0619
13	Stopper	SS 304
14	Snap Ring	SS 301
15	Stud	SS 304
16	Nut	SS 304
17	Tuning Screw	SS 304
18	Support Nut	SS 304
19	Support Pin	SS 316
20	Pin Packing	Graphit
21	Pin Seat	PTFE
22	Cover	PVC



Anti-static device

VALVE DIMENSIONS

	d	L	T	f	N/M	Wl
8"	200	400	24	3	12/22	32
	4-Ma	ISO	E	H	W	Kg
8"	M12	F12	125	305	1000	80.0

## ALL VALVES ONLINE

Offering a full range of actuated valve packages, manual valve range, pipe fittings and pumps, we have a product for all your requirements. As an ISO 9001-2015 Quality Approved and certified company, All Valves offer a quality service from pre-sale to post sale. Shipping millions of pounds in value of manual valve and actuated valve packages all over the world since its formation, All Valves are a trusted valve and actuator supplier to many companies all over the world. Working with the leading brands in most industries.



**T** +44 (0)1386 552369

**E** sales@allvalves.co.uk

**W** www.allvalves.co.uk

**F** +44 (0)1386 554227